

OUR  
QUALITY  
FOR YOUR  
SAFETY



HIGH  
SPEED  
DOORS

Installed *On the Outside*  
Controlled *in the Inside*



MOTORIZED  
ROLLING  
SHUTTERS



AUTOMATIC  
INDUSTRIAL  
SLIDING  
GATE

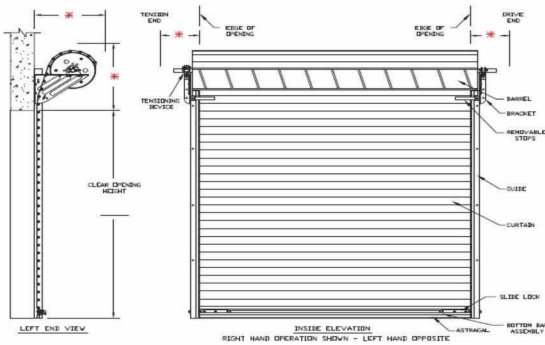
**Sagar**   
**Automation LLP**

We have a wide range of product for industrial steel rolling shutters, high speed rolling doors,  
Homes, offices, showrooms, store fronts, shopping malls for external and internal use.

ALL TYPES OF STEEL RESELLER & MFG.  
ROLLING SHUTTERS & FABRICATION WORKS



## Sagar Automation (LLP) Company Profile



The Sagar Rolling Shutters (SRS), pioneer name in the field of Rolling Shutters with family owned since 1977. Now it's update is Sagar Automation LLP. We take pride in meeting individual needs of our customers. At all Gujarat Rolling Shutter, our goal is to provide you with friendly and professional service and installation.

Experience has proven that every customer and every job is unique. The one thing in common is that our costumers love their shutters. Industrial, Residential and Business customers alike have enjoyed the many benefits of our rolling shutters.

We offer premium quality steel Rolling Shutters like all types of Industrial shutters and doors, Automated Sliding Gates, Aluminum Shutters (Alulux), Rolling Grills, MS Rolling Shutters, Push and Pull Shutters, Electrically Operated Shutters, GI Rolling Shutters, Remote controlled Shutters, Automated Grill Shutters, Gear Operated Shutters etc. We use high grade materials such as SS., MS., GI and Aluminum to ensure optimum strength to the shutters. We manufacture custom designed shutters as per your requirements and also meet deadline. We specialists in motorized rolling shutters.

Take a moment to browse through our website [www.sagarrollingshutters.com](http://www.sagarrollingshutters.com) to see a variety of pictures and product demonstration. Should you have any questions or need more information, contact us and we will be happy to help.

## Our Quality Policy

We offer premium quality steel Rolling Shutters like all type of Industrial Shutters and Doors. Our products are manufactured using A-grade raw materials like aluminum alloys, stainless steel and other materials. They are purchased from select suppliers, who have a good name in the market. The electrical components used in the doors and shutters are procured from standard make company, which is an accomplished brand in the country. The finished goods too undergo a series of stringent checks to determine their strength and performance. Only when the products pass all these countless tests are they allowed to go for sale in the market. Our team of professionals is some of the most experienced personnel in the industry. They have an in depth knowledge of their respective fields and offer the best solutions to the clients, conforming to their specific requirements.

## Infrastructure

Sagar Automation (LLP) works has a strong infrastructure, we maintain high quality products which gives you maximum safety and privacy. The machines operational in our factory are of the latest technology and are cost effective, thereby enabling us to offer our products at competitive prices to our clients. our high production capacity facilitates smooth flow of our products in the market, thereby ensuring no shortage of supply. Sufficient maintenance teams are available for repair and service.

---

It will but take a few moments to browse through our website [www.sagarrollingshutters.com](http://www.sagarrollingshutters.com) to familiarize yourself with the variety of products on offer. If you have any questions or need more information, contact us and we'll be happy to help.

---



Sagar Automation (LLP)  
European make Motor,  
Electrical Operated Rolling Shutters



### SA Gear Operated Rolling Shutters

- Advance technology
- Strong lifting power
- Simple to install
- Can suit left and right mountings
- Remote-control operations
- Patented safety mechanism for chain failures



### SA Electrical Operated Rolling Shutters

European Side Motor



**SA Electrically Operated Rolling Shutters :** Our company offers various types of rolling shutters that includes electrically operated rolling shutters, exterior electric rolling shutters and reduction gear-type rolling shutters, (mecahnically operated by pulling a chain) Ideal for large open areas. Top quality mild steel worm and cast iron gears along with special steel wire springs are installed for smooth working and low maintenance. Gear Type Rolling Shutter is operated mechanically by pulling chain instead of winding handle for large open areas having a clear size of more than 135 sq. ft. Wicket Gate available at additional costs. Our Roller Shutters are suitable for a wide range of applications Industrial, Commercial and Domestic. We install our quality products at Offices, shops, factories, warehouses, schools and other Public Buildings such as hospitals, clinics, colleges.

**SA Powder Coated Shutters :** A range of Powder coated rolling shutters on offer with diverse door coverings. Widely used in shops and homes. Salient features include energy saving, privacy and security in addition to enhancing the value of the house or office. Can be customized as per requirement.

**SA Push and Pull Rolling Shutters :** Manual push and pull rolling shutters are highly durable and have low maintenance costs. An ideal steel wall to protect against theft. A wide range of models weighing from 150kg to 200kg available. The motor is protected by an internal thermal switch.



Phototcells



Key Selector



Remote Control



Safety Brakes



## Sagar Automation (LLP) Perforated Rolling Shutters



**SA Perforated Slat Profile :** Available in several styles, custom made to the exact size and specifications. Self supporting, no structural tubes required to support the shutter coil. Small coil housing. Coil housing available in square, round and 45 degree shapes.

Wide range of standard colors to choose from. Can be made in customized colors also. Scratch and corrosion resistant powder coating. Motorized or manual operation. Remote access operation available. External rolling shutters with perforated (small holes) or punched (rectangle holes) slats can provide illumination giving between 30-40% light transmission when sufficient back light is provided.

Once installed can give full window protection with a level of visibility which will intimidate burglars or vandals.

## SA Aluminum Rolling Shutters

**SA Aluminum :** High precision aluminum alloy manual & automatic rolling shutters. Shutters are light weight and smoothly slidable. Personify security combined with elegance. Applicable for a variety of commercial and residential applications. Relatively low maintenance.

Corrosion-free surface of aluminum rolling shutter additionally coated with a high-quality thick layer stove enamel. Silent CFC free foaming means resonance-free, torsion proof shutter. Low space requirement. Higher scalability of profile and better optical characteristic. Radio controlled operation..





## Sagar Automation (LLP) Electrical Operated Bright Bar Grill Rolling Shutters



Our company has expertise in manufacturing Rolling Security Grills which are made of international standard material. These SA Automatic Rolling Grills are fabricated from high quality steel rods to operate on the same principles as rolling shutter. Ideal for showrooms and display windows. Rolling Shutter Grills permit full ventilation and let in light and keep out pilferers. When overall measurement exceeds 70 sq. ft, ball bearings are provided. Made of 8mm round Bright Bar Steel. Can be motorized for smooth and simple operations. Easy installation & low maintenance costs.



## Insulated Aluminum Rolling Shutters

**Shutter Type : #3 - Narrow profile (Insulated Aluminum)**

Security : Medium

Finishes : White, Beige, Dark Brown, Grey, Cream

Usual Uses : Residential windows and doors, Medium security store fronts, Counter shutters, Room dividers

**Shutter Type: #4 - High density (Insulated aluminum)**

Security : Medium high

Finishes : Baked enamel - Grey

Usual Uses : Residential and Commercial with extremely long spans.



COURTESY OR  
FLASHING  
LED LIGHT

## SA Electrical Sliding Gate

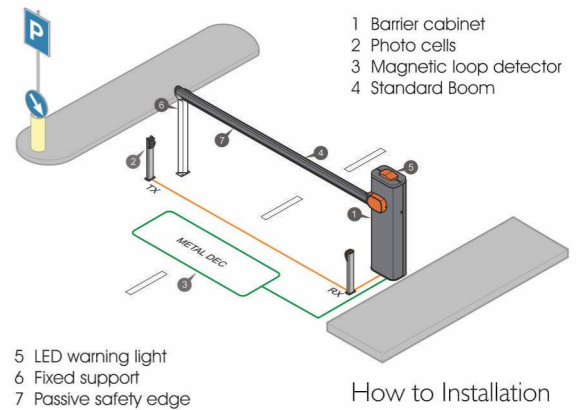
SA Sliding Gate : Electro-mechanical self locking operator suitable for various applications like residential, commercial & industrial.

Available from 400 kg to 4000 kg sizes. Fitted with inbuilt control panel & limit switch. A 24dc model available on certain models for intensive use.

SA Swing-gate : SA Swing Gates are self-locking electro mechanically operated gates. Available as 24v-24dc for intensive use. Its unique design, compactness and functionality allows easy installation and an aesthetic match for any architectural style. Equipped with a fast unlock device with personalized key. Strong worm shaft suitable for the most critical mounting conditions. Low maintenance costs.



**SA Speed-Master 1600** : High speed door is ideally suited for industrial and commercial applications where traffic conditions are moderate and space is at a premium. The door can be applied in either interior or exterior applications where moderate wind and/or negative pressure are a problem. It is fast, safe, low cost to maintain and can take a hit. Speeds available up to 60 inches per second. The ACS-50 is NEMA-4 rated and CUL listed. LED indicators make troubleshooting simple. Includes self- testing and self-monitoring safety features. Full width vision standard. Vinyl material is standard in blue with two ply and three ply monofilament optional. Projects less than four inches from the wall with side clearance of less than seven inches required.



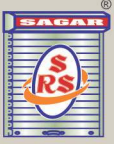
## SA Boom Barriers

**Road Barrier** : Light weight Road Barriers designed with electromechanical technology offer passage up to 2.50m and is suitable for intensive use. Key features include: Silent usage with high durability. Available in stainless steel as well as high quality material used in manufacturing. Control panel included with ready to use, back up system installation feature.

## SA Industrial Sectional Door

For application at industrial sectional door, applied to outdoor passages, logistics center and external doors of factory. The door lane is made of double-layer hot-dip galvanized embossed steel plate, and an even columnar stripe is pressed on the surface. In addition to space-saving, vertical guide rail systems, the sectional door system is characterized by its low-noise operation, durable surfaces and design diversity.





## SA (LLP) Curtain Profiles

Protection, Security,  
Energy Efficiency, Privacy,  
Total Light Control



SA78MM (Round)



SA120MM (Round)



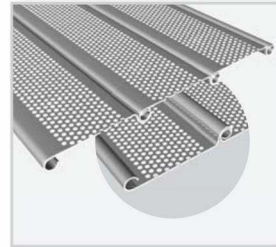
SA120MM (Plain)



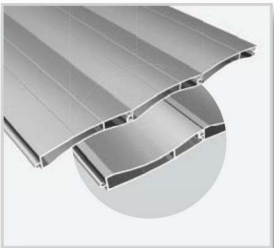
SA78MM (Round Perforated)



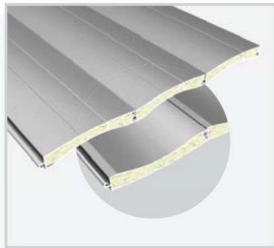
SA120MM (Round Perforated)



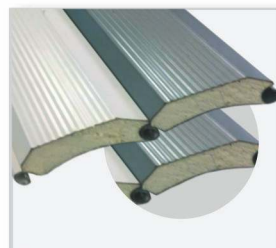
SA78MM (Plain Perforated)



Aluminum Strip SRS81MM



Aluminum double skin PUF



PPGI PUF Profile 0.50 x 95mm

## FEATURES

Security at its best by our rolling shutters.

Insulation from heat and energy saving.

Effective protection against the glaring sun and light in general - for complete privacy.

Rolling shutters help in weatherproofing.

Optimal with individually adapted operating mechanism.

Rolling shutter curtains are interlocking flat faced slats.

Remote control operated rolling shutter with motorized option.

Easy to install on any existing home and business.

A wide range of manually or electrically operated shutters to choose from.

## Our Corporate Clients



Our client list includes Industrial, Residential as well as Business customers

**adani**

**SIEMENS**

**BOMBARDIER**

**Reliance**  
Industries Limited

**Alembic**  
Touching Lives over 100 years

**torrent**  
PHARMA



**apollo**  
TYRES

**CEAT**

- ▶ Sijcon Consultants Pvt.Ltd.
- ▶ Jacobs Engineering India Pvt. Ltd.
- ▶ M/s. Shah & Talati Consultants Engg.
- ▶ Vcare Engineering Pvt. Ltd.
- ▶ Dalal Mott Macdonald Pvt. Ltd.
- ▶ M/s. Smys Consultants,
- ▶ Talif Patel Associated
- ▶ PMC Projects Mundra Port
- ▶ JMC Projects (Ind) Ltd.
- ▶ Phenix Building Construction
- ▶ Interarch Building Products Pvt. Ltd.
- ▶ Smith Structures India Pvt. Ltd.
- ▶ Kirby Building Systems India Ltd.
- ▶ Steelsmith Continental Mfg. Pvt. Ltd.
- ▶ Dev Ashish Infrastructures Padra
- ▶ Rishikesh Structural Solutions LLP
- ▶ Shreeji Infra Structural
- ▶ Power Grid GIDC Waghodia
- ▶ HPCL Refinery Savali
- ▶ Seimens Ltd.
- ▶ Torrant Power Ltd.
- ▶ Adani Power Mundra Gandhidham

- ▶ Areva Renewable Energies India Ltd.
- ▶ Gujarat Thermal Power Station Gail
- ▶ Adani-Tuna Port
- ▶ Voith Hydro Pvt. Ltd.
- ▶ BHEL
- ▶ Simplex Infrastructures Ltd.
- ▶ Adrait Structural Engineering Pvt. Ltd.
- ▶ Conart Engineers Limited
- ▶ M/s. Sandip Nanavati Construction Co.
- ▶ Bridge & Roof (India) Ltd.
- ▶ Bhumi Construction
- ▶ Larsen & Toubro Co. Ltd.
- ▶ Gujarat Refinery
- ▶ Gujarat Glass
- ▶ Thermax Ltd.
- ▶ Ardex Endura India Pvt. Ltd.
- ▶ Mahindra Intertrade Limited
- ▶ Chemco Plastic Pvt. Ltd.
- ▶ Pakona Engineers (I) Pvt. Ltd.
- ▶ Jindal Steel Ltd.
- ▶ ABG Shipyard Ltd.
- ▶ Sejal Glass Ltd.

- ▶ Bombardier Transport India Ltd.
- ▶ Alembic Ltd.
- ▶ Mahatma Mandir Project
- ▶ Alstom India Pvt. Ltd.
- ▶ Ceat Tyres
- ▶ Apollo Tyres Ltd.
- ▶ NBC Bearing
- ▶ Schott Glass India
- ▶ Sterling Gelatin Limited
- ▶ E.I. Dupont India Pvt. Ltd.
- ▶ Reliance Industries Ltd.
- ▶ Lear Shitting Ltd.
- ▶ Pucaro Fugeholm Insulation Kit ABB Division
- ▶ Aditya Birla Ltd.
- ▶ Mahedra Patel Builders
- ▶ Sarav Reyaloty
- ▶ Center Wear House CFS
- ▶ D-Mart all Mall
- ▶ S. Kumar Nations wide Ltd.
- ▶ Sayaji Iron Ltd.
- ▶ National Builders Infra. Pvt. Ltd.
- ▶ Hamilton Housewares Pvt. Ltd.



**Sagar**  
**Automation LLP**

Regd. Office : B-2 Girikandra Duplex, Opp Bapod Talav, B/h Relince Fress,  
Waghodia Ajwa Ring Road, Vadodra - 390019. Gujarat, India.  
[www.sagarrollingshutters.com](http://www.sagarrollingshutters.com)

Factory : C-7/1, Sardar Industrial Estate,  
Road No.1, Ajawa Road,  
Vadodara-390019. Gujarat,India.  
Cell : +91-98982 67000 / 63511 65459  
E-mail : [info@sagarrollingshutters.com](mailto:info@sagarrollingshutters.com)